

OWI PC Interface Software for Robotic Arm Trainer (Windows 2000/XP)

Please read this booklet in its entirety before operation.

The Robotic Arm Trainer Interface is an application that enables you to issue commands from the computer to the Robotic Arm Trainer. You can use the application in Windows © (Win 2000 or Win XP). The Robotic Arm Trainer Interface enables you also to save the program and play it back again. The Robotic Arm Trainer can be activated using the Manual Controller or via the PC program. The Robotic Arm Trainer has three modes of operation:

Manual: using the controller.

Direct: using computer input.

Program: using a pre-recorded Windows © program file.

IMPORTANT!

Due to the nature of the pc parallel port (and devices using a parallel connector) not being able to be detected by Windows right away, please make sure that you have the 007 pc interface connected to your computer's parallel port **BEFORE** you turn your computer ON.

Before you can run the software, you need the Microsoft Windows .NET framework installed on your computer. Please read the "netframework.pdf" file for instructions on how to download/install the .Net framework properly.

Windows 2000 / XP Installation

To install the 007 PC Interface Software, all you have to do is extract the compressed file to a folder of your choice and you should have 3 files – ControlSystem.exe, inout32.dll, and mscoree.dll. After extraction, you will be able to launch the program by double clicking ControlSystem.exe.

System Requirements:

Windows compatible computer 133 mhz or faster with Windows 2000/XP installed

Microsoft .NET Framework installed

Parallel Port

Microsoft Windows compatible mouse

128 MB RAM minimum

4 MB Hard disk free space

OWI INC, 17141 KINGSVIEW AVENUE, CARSON, CALIFORNIA 90746 U.S.A.

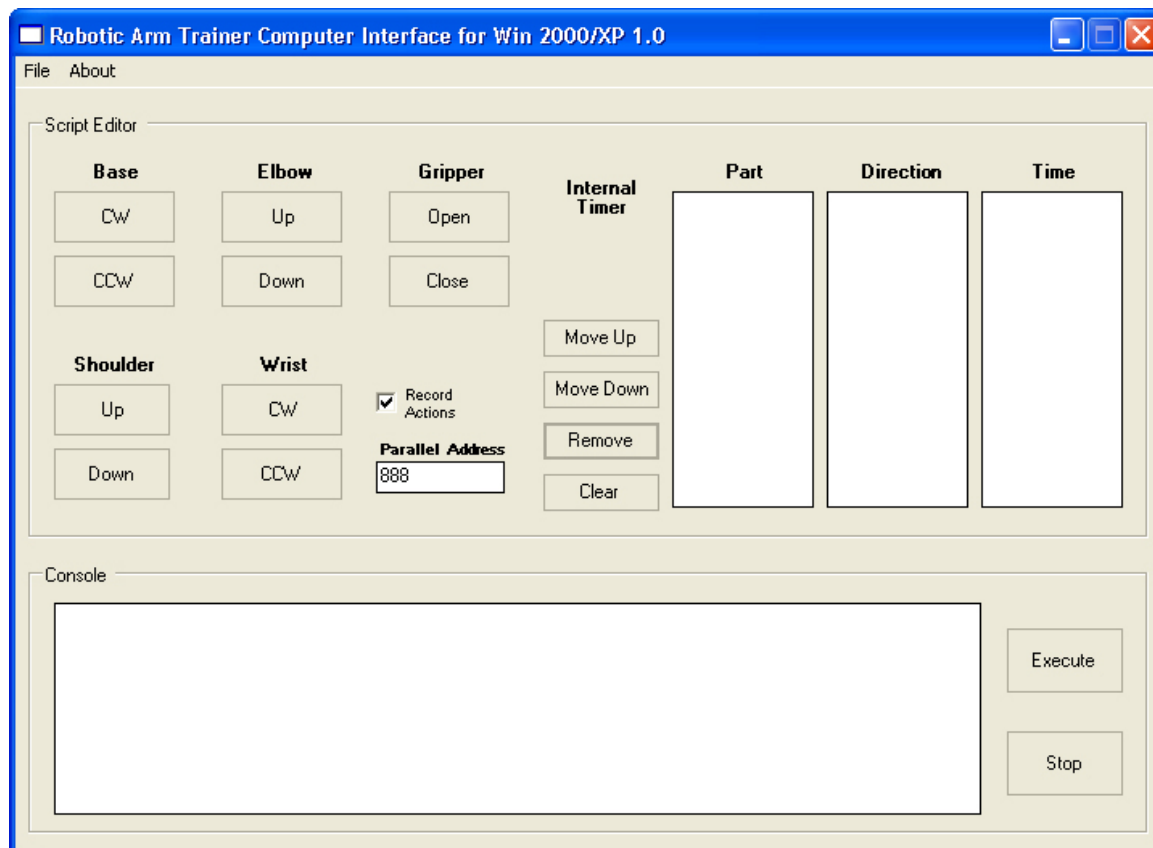
PHONE: 310-515-1900 | FAX: 310-515-1606

WEB: www.owirobot.com | EMAIL: info@owirobot.com

THE PROGRAM'S INTERFACE

File – Lets you Load / Save your set of commands and also Exits you out of the program.

About – Gives you information about the program's version and contact info of the company.



Script Editor area - where all the programming is done.

Command buttons:

Base

CW - controls clockwise movement of the base.
CCW - controls counterclockwise movement of the base.

Elbow

Up - controls upward movement of the elbow.
Down - controls downward movement of the elbow.

Gripper

Open - opens the gripper.
Close – closes the gripper.

Shoulder

Up - controls upward movement of the shoulder.
Down - controls downward movement of the shoulder.

Wrist

CW - controls clockwise movement of the wrist.
CCW - controls counterclockwise movement of the wrist.

OWI INC, 17141 KINGSVIEW AVENUE, CARSON, CALIFORNIA 90746 U.S.A.

PHONE: 310-515-1900 | FAX: 310-515-1606

WEB: www.owirobot.com | EMAIL: info@owirobot.com

Internal Timer - shows duration of each command in real time.

Part, Direction, and Time windows

- shows the list of which robot parts were activated, its direction, and duration of each movement.

Move Up - moves the selected command up in the list

Move Down - moves the selected command down in the list.

Remove - removes the selected command in the list.

Clear - removes all commands in the list.

Record Actions - if checked, it saves each command to the Part, Direction, and Time windows.

Parallel Address - shows the current parallel port address. Default is "888".

Console area

Console box - shows the current status of the commands being transmitted to the robot.

Execute - transmits the command/s to the robot.

Stop - stops the current transmission of commands to the robot.

HOW TO PROGRAM

You can program the robot in two ways:

Online – The robot is connected to the 007 pc interface during programming. This makes the robot perform the commands being made in the program in real time.

Offline – The robot is not connected to the 007 pc interface during programming. Commands will be uploaded to the robot after the programming is done. If you choose this, make sure that the 007 pc interface is turned OFF before you connect it to the robot.

1. Click on the command button of your choice. You can tell the robot how long it will do the command by doing any of these:

- Click on the command button and hold it for the whole duration of the command.
- Click once on the command button and then double click on its time in the TIME box. A new window will appear and ask you for the new time value.

** You can also double click on the PART and DIRECTION window to change its values.

2. Once programming is done, connect the robot (if you chose offline programming) and press the EXECUTE button.

3. You can save your program, if you wish, by clicking FILE then SAVE. To load previously saved programs, click FILE then LOAD.

REMINDERS!

1. Always have the 007 pc interface connected to your computer before you turn your computer ON.
2. Make sure that the 007 pc interface is turned OFF before you connect it to the robot (Offline programming).
3. If the robot suddenly moves even without having commands in the program, just hit the STOP button

Warranty

Your OWI Robotic Arm Trainer Interface is factory tested and guaranteed to be free of manufacturing defects for a period of 30 days from the date of purchase. OWI will provide replacement parts and/or repair at no charge within this period. All returns to be shipped freight prepaid. This warranty gives you specific legal rights, and you may also have other rights, which may vary from state to state.

Liability Waiver

OWI assumes no responsibility as to the ultimate use or suitability of such use by the customer of the Robotic Arm Trainer. The responsibility of operating this kit lies totally with the customer including any damage that may be incurred directly or indirectly due to the use of this kit.

For more information, please contact OWI INC.

OWI INC, 17141 KINGSVIEW AVENUE, CARSON, CALIFORNIA 90746 U.S.A.

PHONE: 310-515-1900 | FAX: 310-515-1606

WEB: www.owirobot.com | EMAIL: info@owirobot.com